



Application Guide

Modbus Configuration



Contents

Contents	2
Revision History	2
1 Overview	3
2 Description	3
2.1 Topology.....	3
2.2 Hongdian Setup(SNMPV2c).....	4
2.3 Hongdian Setup(SNMPV3).....	6
2.4 Check on SNMP server.....	错误! 未定义书签。
2.5 SNMP Function List.....	错误! 未定义书签。

Revision History

Updates between document versions are cumulative. Therefore, the latest document version contains all updates made to previous versions.

Doc Version	Product	Release Data	Details
V1.0	Hongdian Router	2017.08.23	First Release
V2.0	Hongdian Router	2020.09.03	

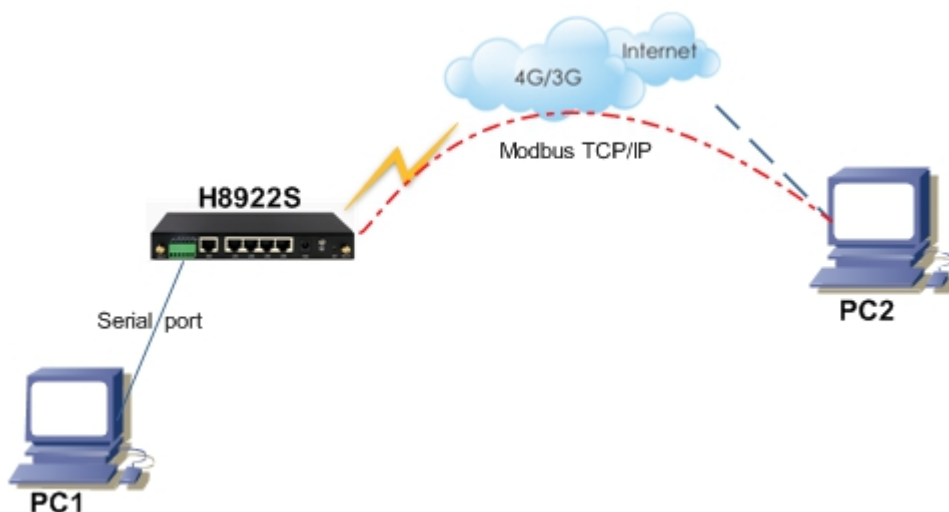
1 Overview

Modbus is a serial communication protocol, which was published by Modicon company (now Schneider Electric) in 1979 for the use of programmable logic controller (PLC) communication. Modbus has become an industry standard (De facto) for communication protocols in the industrial field, and is now a common connection method between industrial electronic devices.

Here we describe the router Modbus function list and operation of Hongdian Router for you.

2 Description

2.1 Topology



2.2 Hongdian Setup(Modbus - master)

1. Let the PC connect to the router and browse into the router’s configuration web page. Enter “Application->DTU/MODBUS” page to configure the Modbus function. choose Connection type “modbus” ,and modbus workmode choose “modbus_rtu_master” or “modbus_acsii_master”, the server ip set the remote modbus slave ip and port(PC2),the “Serial setting” according to the actual situation,while others can follow the writing in the figure below.

Network	IPv6	Applications	VPN	Forward	Security	System	Status	
ICMP Check	DDNS	DTU/MODBUS	SNMP	SMS	Radius	Tacacs+	VRRP	SIM Select

DTU Service Enable Disable

Connection Type

Modbus Mode

modbus workmode ms
 Received Timeout ms
 Serial Data Timeout ms

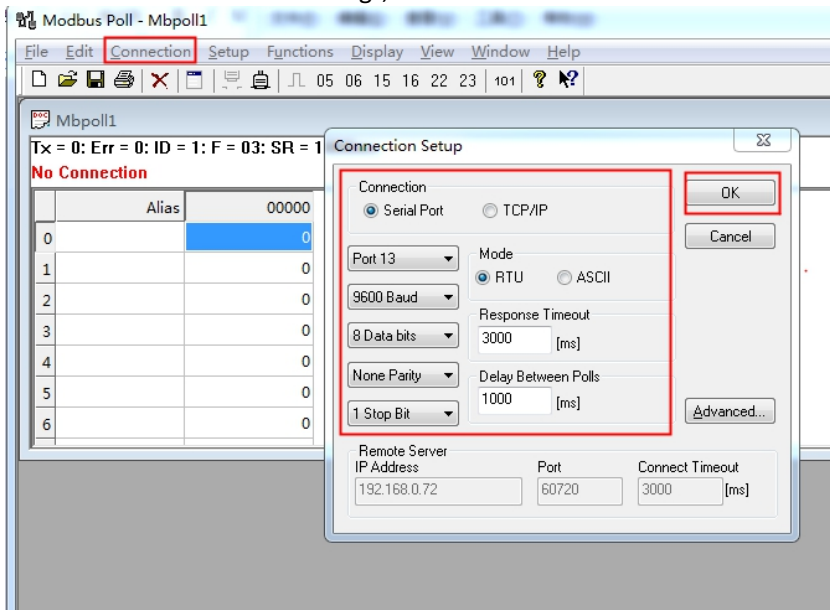
Modbus Master Setting

Server1 IP	<input type="text" value="220.231.134.116"/>	* Max length is 64
Server1 Port	<input type="text" value="60720"/>	* 1-65535
Server2 IP	<input type="text"/>	Max length is 64
Server2 Port	<input type="text"/>	1-65535
Server3 IP	<input type="text"/>	Max length is 64
Server3 Port	<input type="text"/>	1-65535
Server4 IP	<input type="text"/>	Max length is 64
Server4 Port	<input type="text"/>	1-65535
Server5 IP	<input type="text"/>	Max length is 64
Server5 Port	<input type="text"/>	1-65535
Server6 IP	<input type="text"/>	Max length is 64
Server6 Port	<input type="text"/>	1-65535
Server7 IP	<input type="text"/>	Max length is 64
Server7 Port	<input type="text"/>	1-65535
Server8 IP	<input type="text"/>	Max length is 64
Server8 Port	<input type="text"/>	1-65535

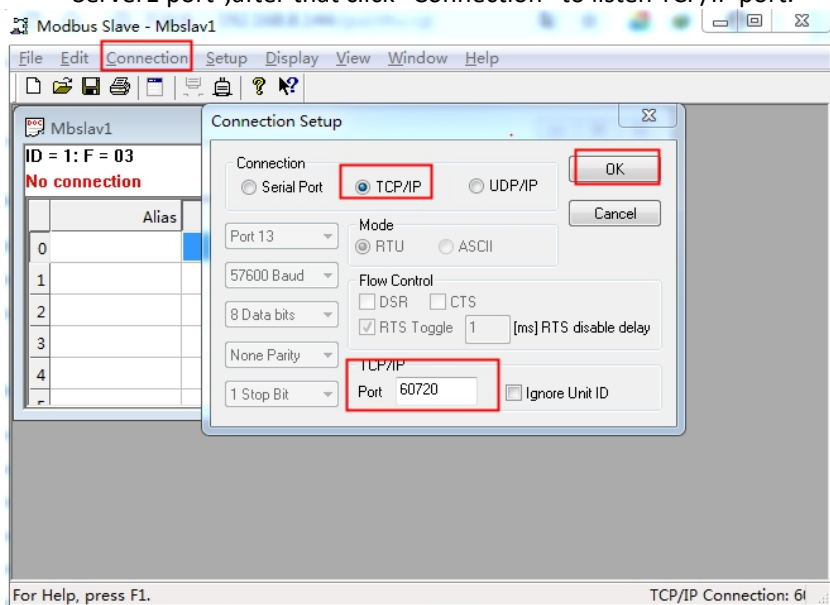
Serial Setting

Rate
 Parity
 Databits
 Stopbits

- Turn to the “Modbus Poll” on the PC1, and click the “connection”,set the “Connection Setup” option same as the router “Serial setting”,after that click “Connection” to connect to the router.

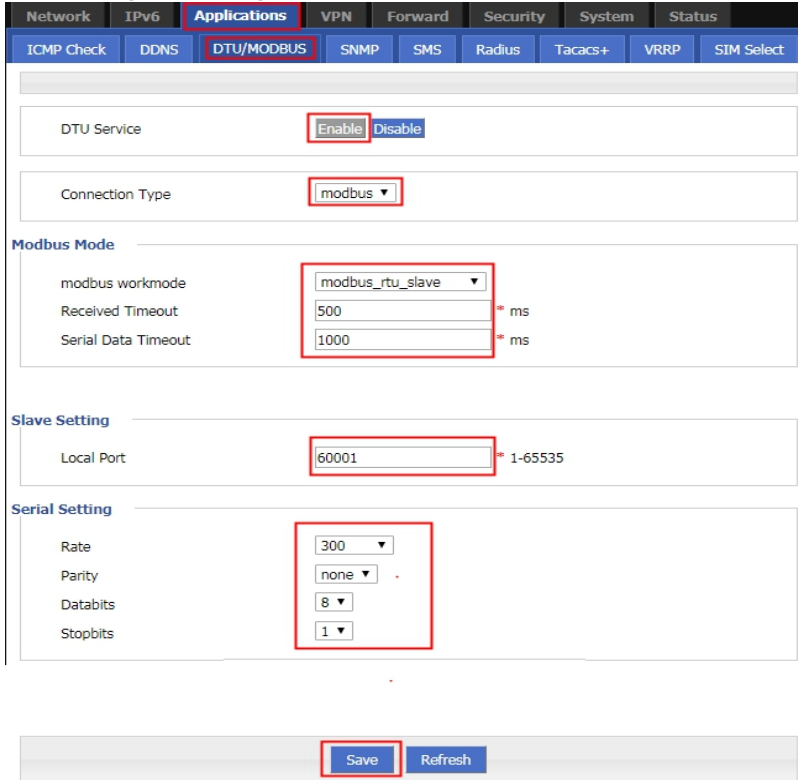


- Turn to the “Modbus Slave” on the PC2 , set the “Connection Setup” option port same as the router “Server1 port”,after that click “Connection” to listen TCP/IP port.

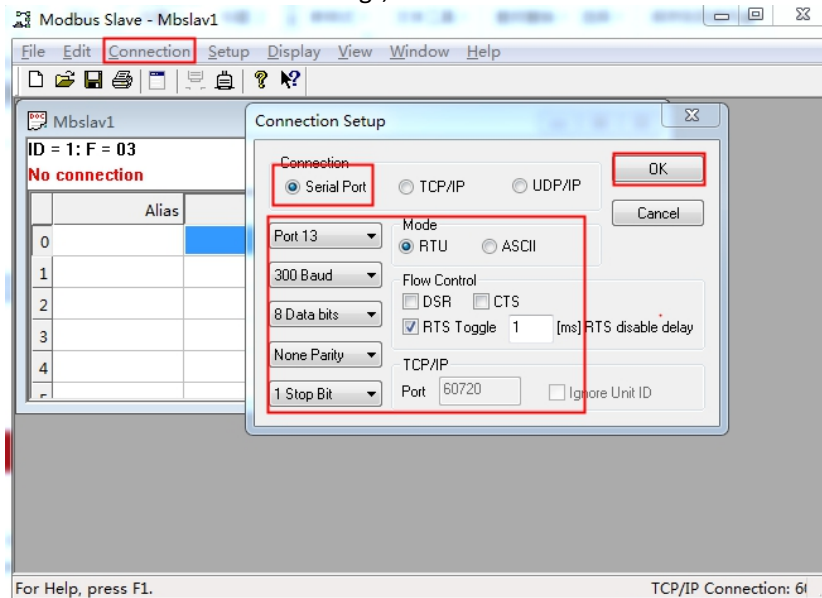


2.3 Hongdian Setup(Modbus - master)

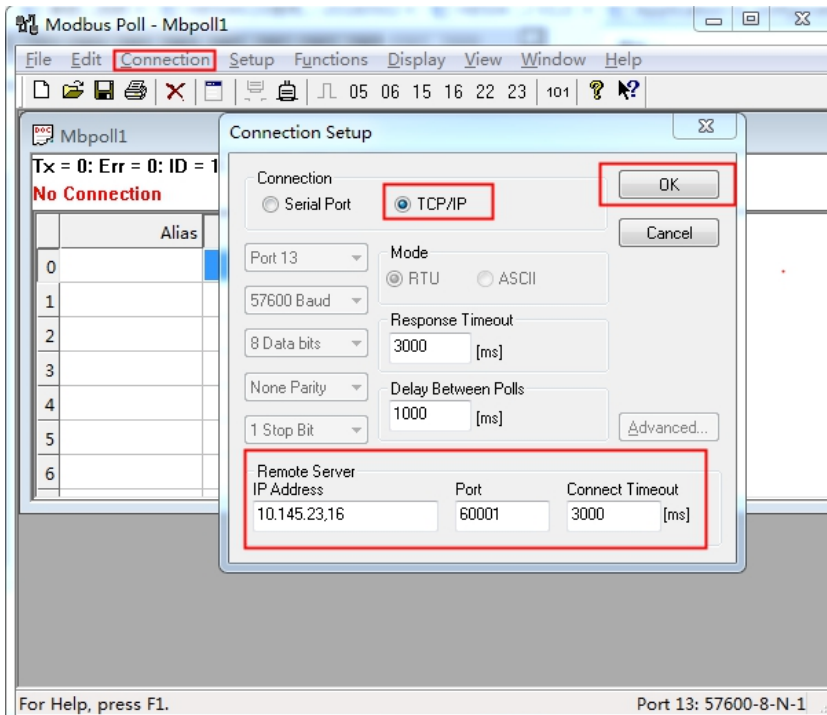
1. Let the PC connect to the router and browse into the router’s configuration web page. Enter “Application->DTU/MODBUS” page to configure the Modbus function. choose Connection type “modbus” ,and modbus workmode choose “modbus_rtu_slave” or “modbus_acsii_slave”,the “Serial setting” according to the actual situation,while others can follow the writing in the figure below.



2. Turn to the “Modbus Slave” on the PC1, and click the “connection”,set the “Connection Setup” option same as the router “Serial setting”,after that click connection to connect to the router.



3. Turn to the “Modbus Poll” on the PC2, and click the “connection”,set the “Connection Setup” option IP Address as the router internet “IP Address”, “Port” as the router “Local Port”,after that click connection to connect to the router.







Create smart things



Contact us

 F14 - F16, Tower A, Building 14, No.12, Ganli 6th Road, Longgang District, Shenzhen 518112, China.

 +86-755-88864288-5

 +86-755-83404677

 hongdianchina

 www.hongdian.com

 sales@hongdian.com

 Hongdian_China